

Vaporesso Firmware Guidance (TPCBA Version)

Download:

1. Please download the firmware package from Vaporesso webpage.

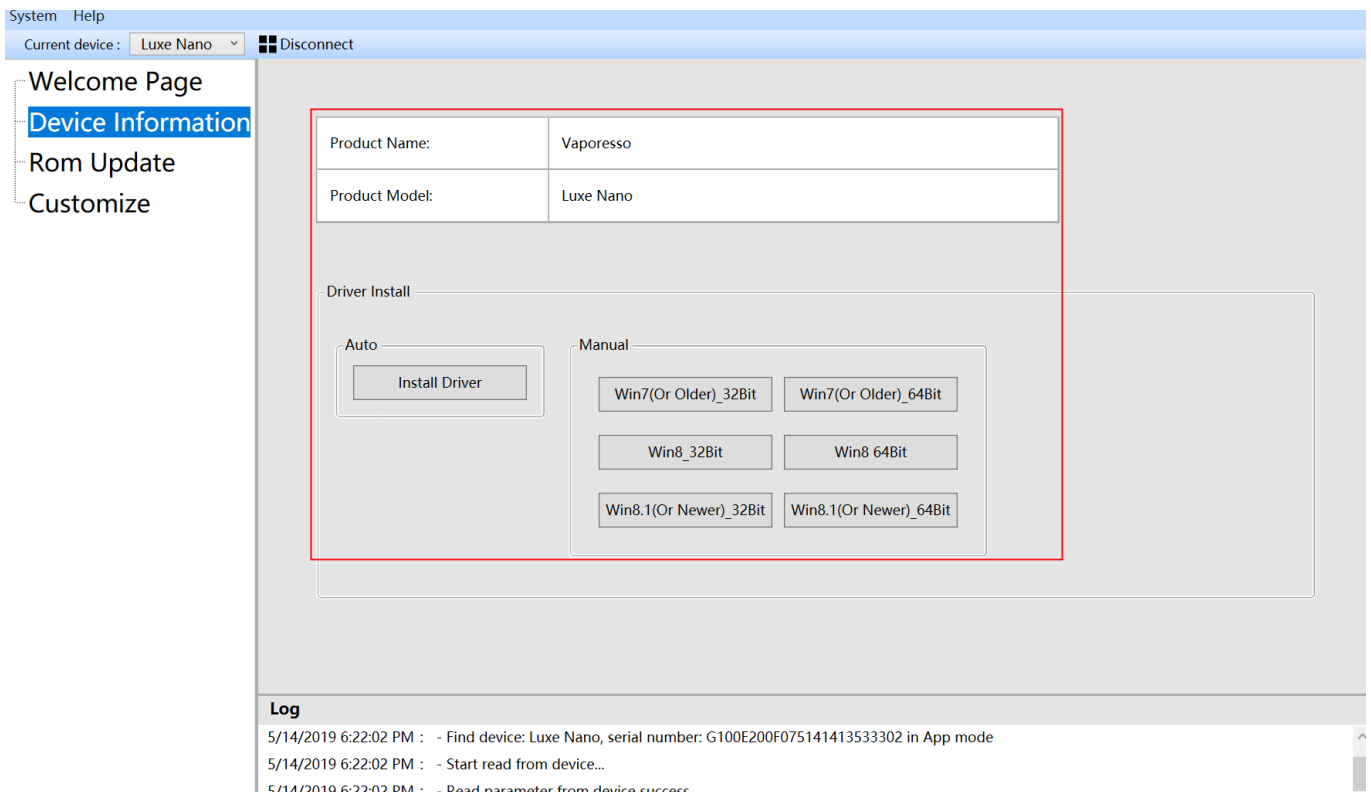
<http://www.vaporesso.com/download-manuals-for-vapes>

Update and Customize: (e.g. Luxe Nano)

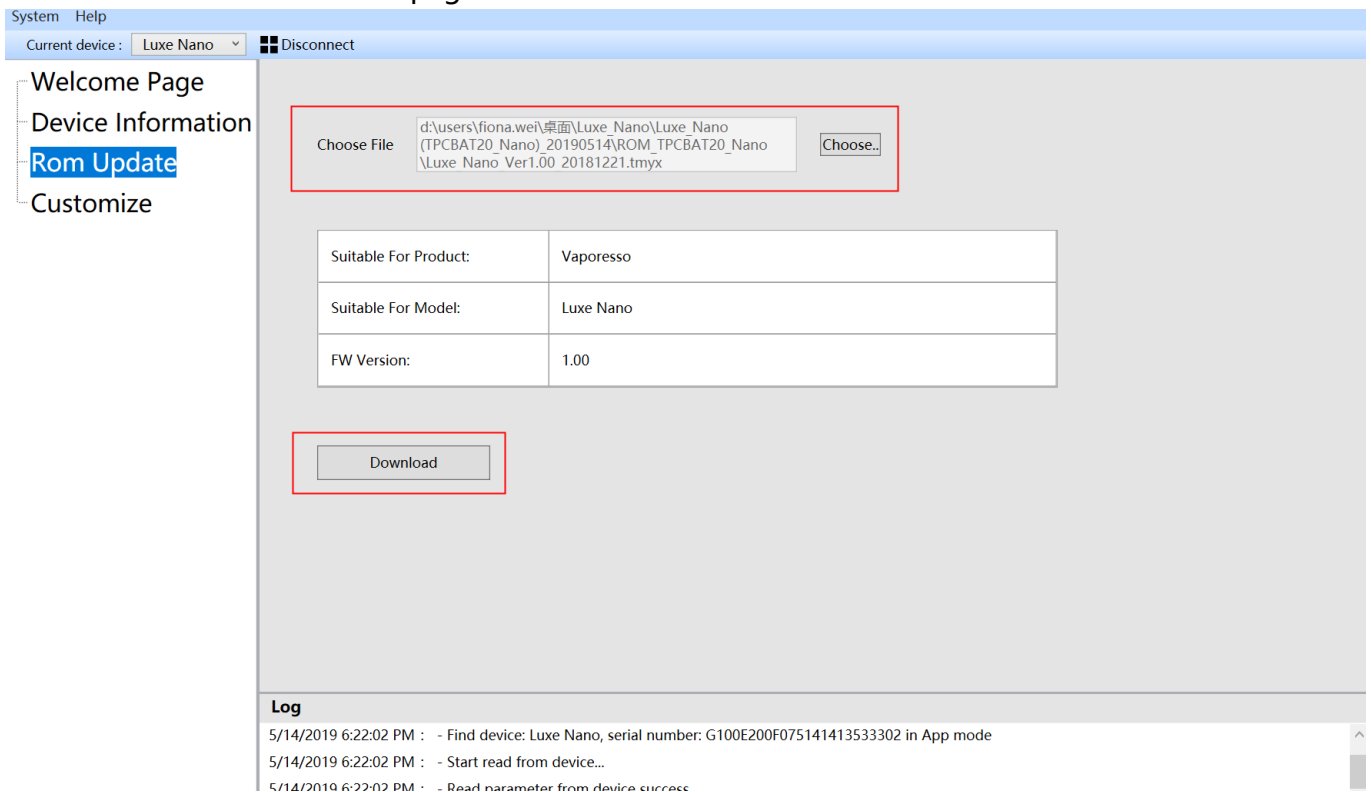
1. Please check your hardware version from the system settings in your devices. (SPCBA/TPCBA)
And then choose the firmware version to update and customize.
2. Run the installer file and install the firmware.
*Please do not change the default install folder, otherwise the installation could be failed.
3. Run the firmware and turn off your Vaporesso device before connection.



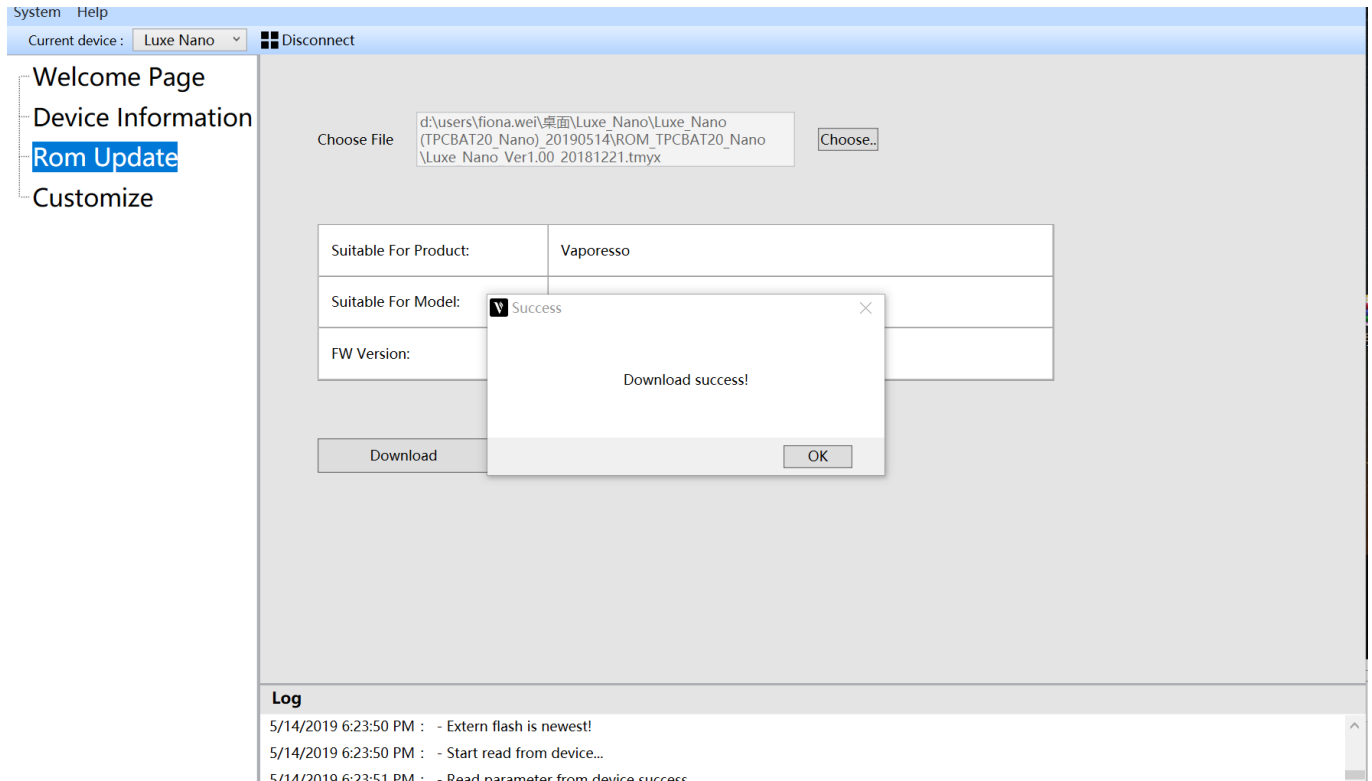
4. Keep battery inside, and hold down the fire button before plug it into the pc to get connected, only release the fire button after the connection is successfully built.
*The name of your device will appear in Current Device list blank after connection.



- Choose "Rom Update" and accordingly select the latest firmware update that you shall have downloaded from the webpage. Suitable model and firmware version will be shown on screen.



6. Press the “Download” button to update the firmware. Wait until the updating percent reach 100%.



7. Finally, please just unplug the USB cable from PC.

FAQ:

1. Why can't I connect my device to PC?

- A. Please make sure your device is turned off and keep holding fire button before insert the cable.
- B. Try to use a new USB cable to make sure it isn't caused by a faulty cable.

2. Why can't I update the firmware?

- A. Please make sure the firmware version you choose is the correct one matches your device.
- B. Try to use a new USB cable to make sure it isn't caused by a faulty cable.

*If you have any further questions, please feel free to contact our customer service.